

FOR SALE

1525-1545 Nations Drive, Gurnee, IL 60031



Colliers

Contact

Peter Block
Executive Vice President
+1 847 384 2840
peter.block@colliers.com

Josh Mack
Associate
+1 847 707 3087
josh.mack@colliers.com

This document/email has been prepared by Colliers for advertising and general information only. Colliers makes no guarantees, representations or warranties of any kind, expressed or implied, regarding the information including, but not limited to, warranties of content, accuracy and reliability. Any interested party should undertake their own inquiries as to the accuracy of the information. Colliers excludes unequivocally all inferred or implied terms, conditions and warranties arising out of this document and excludes all liability for loss and damages arising therefrom. This publication is the copyrighted property of Colliers and/or its licensor(s). © 2026. All rights reserved. This communication is not intended to cause or induce breach of an existing listing agreement.

1525-1545 Nations Drive, Gurnee, IL 60031



1525 Nations Drive

Property Highlights

- Asking Sale Price - \$1,450,000.
- Adjacent to Six Flags Great America, Gurnee Mills, and Great Wolf Lodge.
- Benefit from strong daily traffic generated by nearby national retailers including McDonalds, Culver's, Starbucks, and more.

Demographics Snapshot

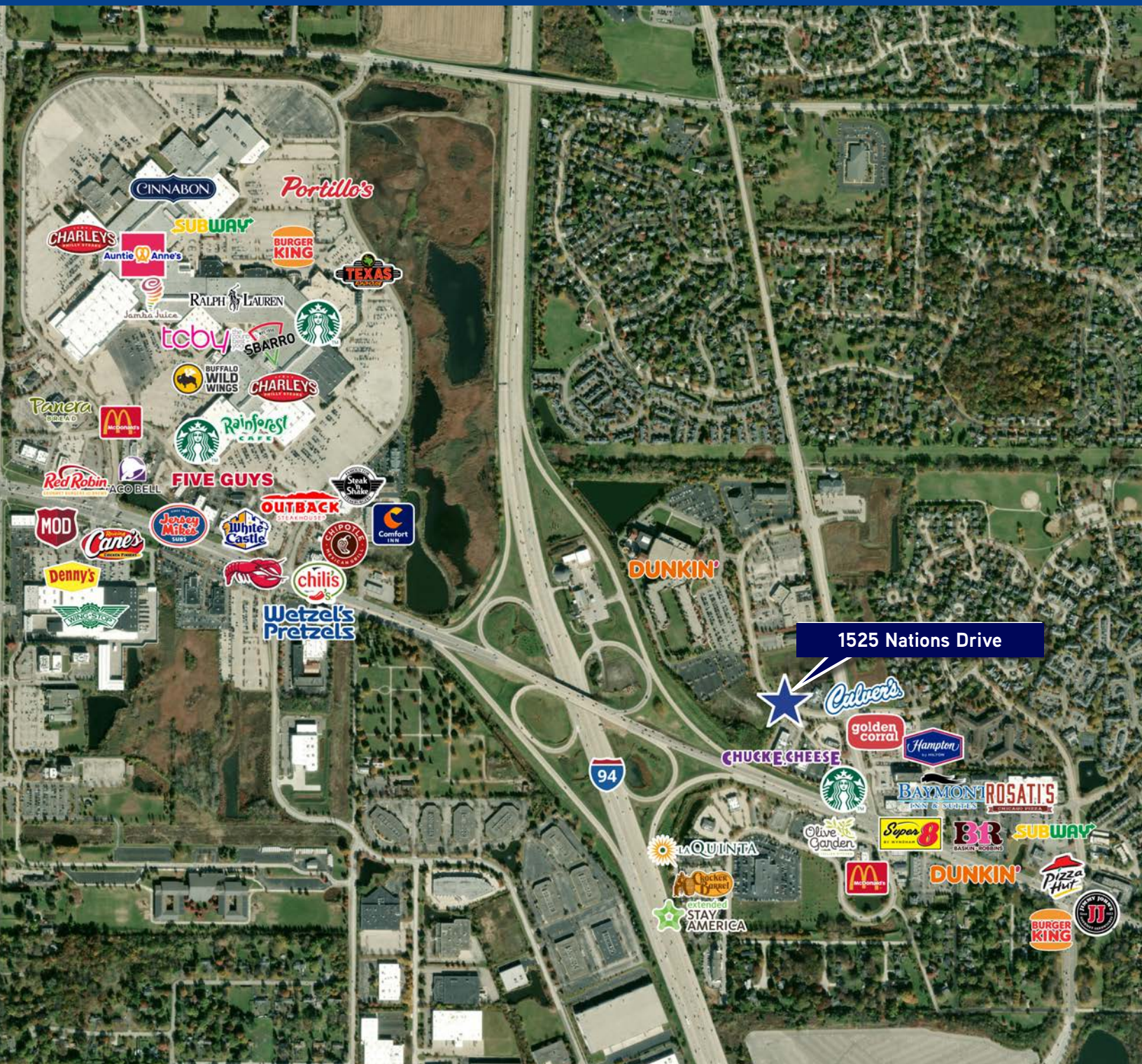
		1 Mile	3 Miles	5 Miles	
Space Available	Total - 3.59 Acres Parcel A - 2.07 Acres Parcel B - 1.52 Acres				
Traffic Counts	8,050 VPD				
Uses	Retail/Restaurant/Service Hotel/Medical/Auto/Childcare/ Self Storage				
		Population	5,561	45,599	130,738
		Average HHI	\$158,864	\$159,425	\$133,156
		Households	2,315	17,999	48,739

FOR SALE

Colliers

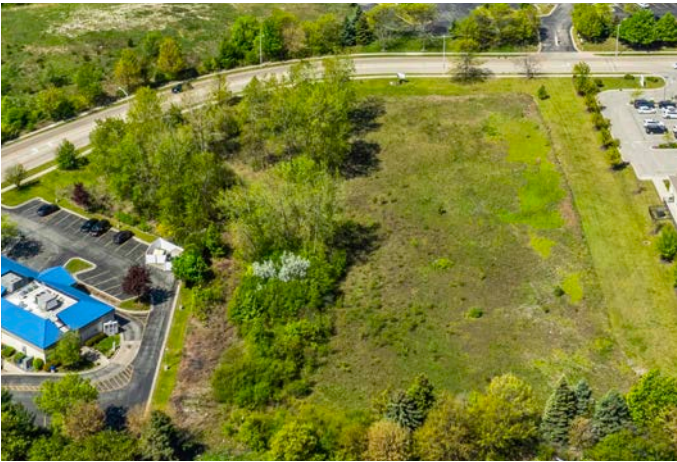
1525-1545 Nations Drive, Gurnee, IL 60031

Retail Map



FOR SALE

Colliers



Contact

Peter Block
Executive Vice President
+1 847 384 2840
peter.block@colliers.com

Josh Mack
Associate
+1 847 707 3087
josh.mack@colliers.com